

# Installation Guide

## XenData6 Workstation software

Version 6.21



Updated: 5-Oct-2016

## Hardware Requirements

1. A computer with a 64 bit edition of a Windows 10, 8.1 or Windows 7 operating system and at least 4 GB RAM.
2. An LTO tape drive that is certified to work with this version of XenData6 Workstation. Please refer to the XenData web site ([www.xendata.com](http://www.xendata.com)) for information on the supported LTO drives and the certified device drivers.
3. For SAS connected LTO drives, a SAS cable and HBA compatible with the chosen tape drive e.g. HP 221 dual port 6 Gb/s. Please refer to the XenData web site ([www.xendata.com](http://www.xendata.com)) for information on the supported HBAs.
4. For USB connected LTO drives, an available USB 3.0 or 2.0 port is required. USB 3.0 is preferred for performance reasons.

## XenData6 Workstation Software Installation

### Pre-requisites for SAS Connected LTO Drives (Windows 10, 8.1 and 7)

1. Ensure that a certified tape drive is connected to the workstation; that it is powered on and that the certified device driver is installed.
2. A XenData Activation Code is required for XenData6 Workstation software installation.
3. A working Internet connection on the workstation simplifies program activation.
4. Any file transfers to or from LTO tape will pause if the workstation sleeps or hibernates. Consequently, we recommend that you configure Power Options for the workstation to prevent sleeping or hibernating.

### Pre-requisites for USB Connected LTO Drives on Windows 7

1. Turn on the drive unit and connect the USB cable to the USB port on your computer. Install a device driver as described below:
  - ❖ Navigate to Device Manager (If you connect this drive to a computer for the first time or if you connect this drive into a different USB port, the tape drive is recognized in the Device Manager but the driver has not been applied). This drive on the Device Manager will be recognized in "Other devices" as "IBM ULTRIUM-HH6 USB Device".
  - ❖ Right-click on "IBM ULTRIUM-HH6 USB Device" and in the menu select "Update Driver". Then select the "Select from a list of device drivers on your computer", select the "Tape Drive" in the Common hardware then from the Manufacturer list select "LTO" and then apply the standard LTO tape driver provided by Windows in the right hand pane. A warning will be displayed, select "Yes" to continue. Close the dialog box and check that the drive is displayed in the "Tape drive" section of the Device Manager.

2. Install Microsoft Hotfix KB2581464 available from here: <http://support.microsoft.com/kb/2581464>

This is required because Windows 7 does not support USB devices with the data transfer sizes required to write to LTO unless this hotfix is installed.

3. Reboot the computer.

4. Configure Power Options for the computer to prevent sleeping or hibernating. (This is because any file transfers to or from LTO will pause if the computer sleeps or hibernates.)

### Pre-requisites for USB Connected LTO Drives on Windows 10 and 8.1

1. Turn on the drive unit and connect the USB cable to the USB port on your computer. Install a device driver as described below:

- ❖ Navigate to Device Manager (If you connect this drive to a computer for the first time or if you connect this drive into a different USB port, the tape drive is recognized in the Device Manager but the driver has not been applied). This drive on the Device Manager will be recognized in "Other devices" as "IBM ULTRIUM-HH6 USB Device".
- ❖ Right-click on "IBM ULTRIUM-HH6 USB Device" and in the menu select "Update Driver". Click "Browse my computer for driver software" then select the "Let me pick from a list of device drivers on my computer", select the "Tape Drive" in the Common hardware then from the Manufacturer list select "LTO" and then apply the standard LTO Tape Driver provided by Windows in the right hand pane. A warning will be displayed, select "Yes" to continue. Close the dialog box and check that the drive is displayed in the "Cassette drive" or "Tape Drive" section of the Device Manager.

2. Reboot the computer.

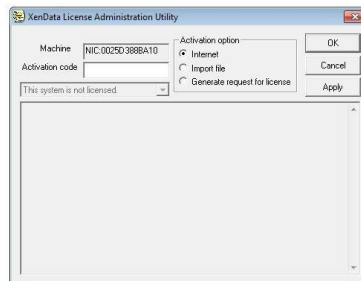
3. Configure Power Options for the computer to prevent sleeping or hibernating. (This is because any file transfers to or from LTO will pause if the computer sleeps or hibernates.)

## XenData6 Workstation Software Installation

### Procedure for a New Installation

Download the XenData6 Workstation installation file and double click on the installation file to launch the installation wizard and proceed as follows.

- ❖ Carefully review the License Agreement and, if you agree, accept the terms of the agreement.
- ❖ When the License Administration Utility interface is displayed as shown below, enter your Activation Code into the designated field.



- ❖ When a working Internet connection is available, click “Apply”. The License Administration Utility will connect to a XenData License Server and will activate your system. The details of the activation will be displayed in the lower pane of the License Administration Utility. Then click ‘OK’.
- ❖ If Internet access is not available for the workstation being licensed, you can use another machine that does have an Internet connection by performing the following steps:
  1. Select the ‘Generate request for license’ option and click *Apply*.
  2. The License Administration program prompts you for a file name. Choose a convenient name for the file and click *Save*.
  3. Transfer the file that you have just saved to a different machine that has Internet access.
  4. Open the file in your Web browser by double clicking on it.
  5. Right-click on the link in the file you have just opened and select ‘*Save target as...*’ and select a location to save your license file.
  6. Copy the saved license file back to the workstation that is being licensed.
  7. In the license administration utility, select the ‘Import file’ option and click *Apply*.
  8. Browse to the saved XML license file and open it.
  9. Click ‘OK’
- ❖ Reboot the workstation after successful completion of the installation wizard.

### **Procedure for Upgrading an Existing Installation from a Previous Version**

New versions of XenData software can be used by any customer who had valid software maintenance in place with XenData on the effective release date.

To upgrade from a previous version of XenData6 Workstation software, please follow these steps:

- First check that your computer is running a 64 bit edition of Windows, as version 6.21 of XenData6 Workstation software only runs on 64 bit editions.
- Un-install the current software using Add/Remove Programs in the Windows Control Panel.
- Reboot the computer.
- Download the XenData6 Workstation installation file
- Double click on the XD6Workstation\_setup file to launch the installation wizard. Follow the wizard prompts.
- Reboot the computer after successful completion of the installation wizard.

Index information about offline tapes, system configuration and license information will be maintained from the previous version.

## **XenData Technical Support**

Support is available from XenData at:

Email: [support@xendata.com](mailto:support@xendata.com)

UK Support: +44 1223 370114

US Support: +1 925 465 4300