



## E100

# Object Storage Archive Appliance 360 TB to 1.8 PB

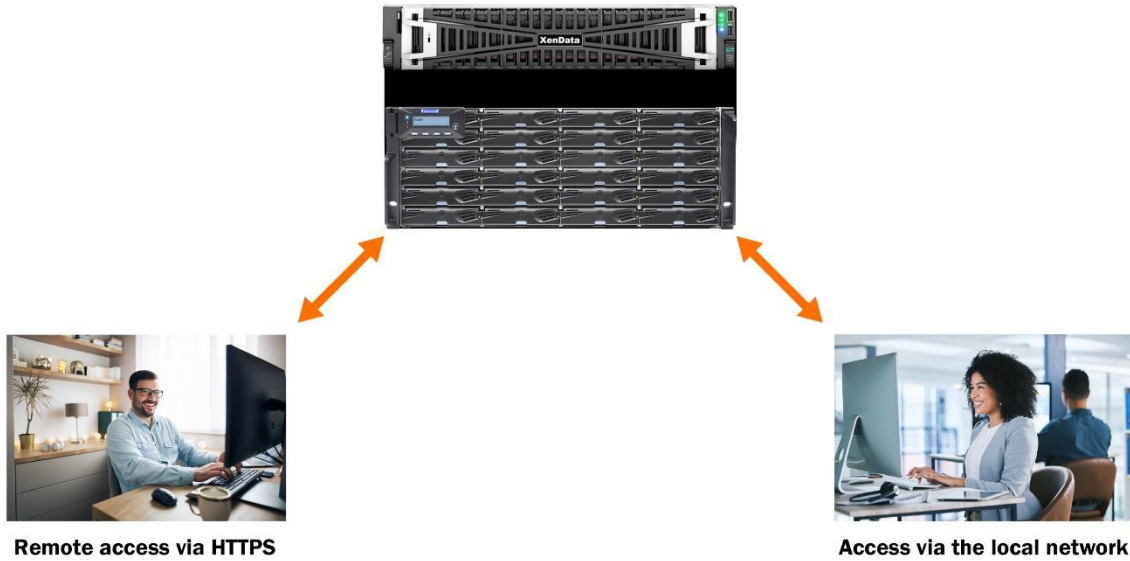
## Key Functionality

- ✓ Access object storage using an S3 interface and create your own private cloud, accessible from anywhere via secure HTTPS.
- ✓ Simultaneously access as on-premises Network Attached Storage via SMB, NFS or as local storage.
- ✓ Easily expandable - start with one 360 TB node and scale to 1.8 PB by adding up to four additional 360 TB nodes.
- ✓ High performance archive and restore. Uses dual 8 core processors and has 10/25 GbE network option.
- ✓ Media-focused object storage. Includes XenData Media Portal. Supports Partial File Restore and streaming to media players.
- ✓ Compatible with many industry-leading asset management applications using XenData APIs for tight integration.
- ✓ Three data protection options: mirroring content to LTO data tape, copy to public cloud or another E-Series Appliance.
- ✓ Deep archive option moves files to LTO tape or cloud. Supported cloud storage tiers include AWS Glacier and Azure Archive Tier.



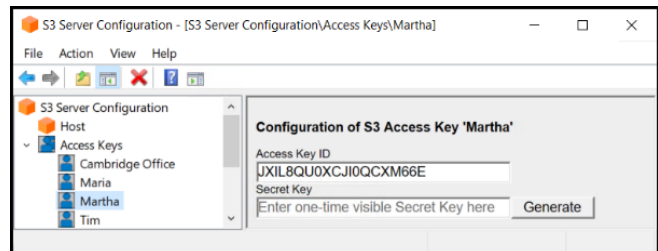
# Simultaneous Object and File Access

The XenData E100 Appliance may be accessed as object storage via HTTP or HTTPS or as Network Attached Storage (NAS) over the local network via SMB, NFS or FTP.



All content stored on the appliance can be accessed as a one or more file shares. In this case, the appliance uses standard Microsoft security based on Active Directory, making it easy to add to an existing domain or workgroup.

When the content is accessed as object storage, either HTTP or HTTPS is used and one or more folders in the file system are designated as S3 buckets. Access to these is controlled via keys generated on the E100 by a system administrator.



## Start with 360 TB and Grow

The base system has one 360 TB storage node which is connected to the appliance via two redundant fibre channel (FC) connections. Up to four additional nodes can be connected via FC and each adds a further 360 TB of usable capacity. The maximum usable capacity is 1.8 PB, with a total of five nodes connected.

This allows you to increase the capacity of the appliance capacity as your storage requirements grow.

# High-Performance Archiving

The appliance has two 8-core Xeon processors and 128 GB of RAM. Each node has 24 enterprise-class 18 TB SAS disks managed by a controller with a 64 GB cache. The configuration delivers a high-performance active archive.

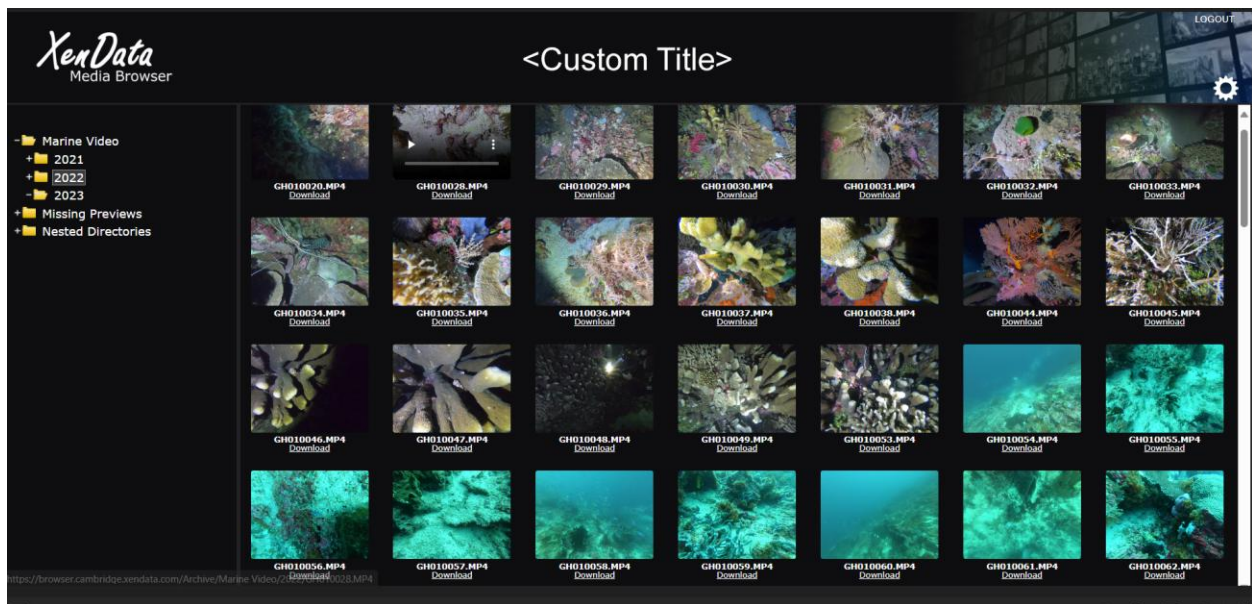
In addition to four 1 GbE ports, the appliance has multiple network connectivity options:

- ❖ Dual 10/25 GbE SFP ports
- ❖ Dual 10 GbE SFP+ ports
- ❖ Dual 10 GbE Cat6 type ports

# Optimized for Media

Both the file system and object storage access are optimized for media files. The system supports partial file restore which means you can restore portions of large files to create video clips. Furthermore, video content can be played directly from the appliance without having to restore the complete file.

The E100 appliance includes XenData Media Portal. It provides a web interface that can be accessed remotely or on-premises. It allows a user to search or browse the archive file-folder structure and see previews of video and image files within the selected folder. An authorized user can also use the portal's web interface to download any selected file. By previewing files, users can be sure that they are selecting the correct content before restoring.



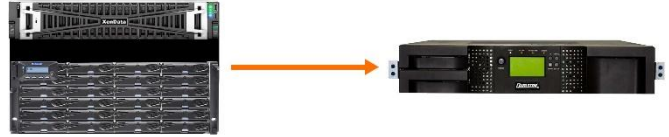
Where the capabilities of a Media Asset Manager are required, the E100 can be integrated with most of the leading MAMs, either running on the E100 Appliance or on another machine. An E100 Appliance, coupled with a MAM, can create a centralized media storage system that fosters easy collaboration among teams and provides greatly increased productivity throughout the organization.

# Data Protection Options

The E100 has three options to protect your valuable content: mirror to LTO data tape, mirror to the cloud and mirror to another E-Series appliance in a different location.

## Mirror to LTO

Attach a robotic LTO library to the appliance and write another instance of all files/objects to LTO data tape. The base E100 system includes a software license to manage an LTO library with up to 24 slots and two LTO drives.



The intrinsic sequential recording of tape means that all versions of files/objects will be recorded to tape, providing excellent ransomware protection and allowing accidentally deleted or overwritten content to be restored.

## Mirror to Public Cloud

Configure the appliance to write another instance of all files to cloud object storage for data protection. Compatible cloud storage includes AWS, Azure, Seagate Lyve and Wasabi. AWS Glacier tiers and the Azure Archive Tier are supported.



## Mirror to another E-Series Appliance

Configure the appliance to write another instance of all files to a second E-Series Appliance in another location. The two appliances can be configured to replicate in both directions.



# Deep Archive Option

With one of the above data protection options enabled, the appliance can be configured with storage retention policies to convert files/objects to stubs. The stub takes minimal space on the appliance disk storage.

The ability to configure the appliance for deep archive allows you move content off the E100 nodes to LTO or cloud storage to free up space.

For example, if the E100 appliance is configured with an LTO library, files/objects stored in specific folders or buckets may be converted to stubs after a specified retention period, say 6 months after written or last read. The content is still available from LTO tape but not immediately available from the 360 TB disk nodes. If the LTO cartridges that contain the required content are not in the attached LTO library, the system will issue an email alert and/or on-screen message identifying the barcode of the required cartridge or cartridges.

# Specification



## Base System with 1 x 360 TB Node

XenData Part Number 305101

APPLIANCE	
Management software: - perpetual licenses	XenData Archive Series S3 Server interface XenData Cloud File Gateway Media Portal XenData Alert Module
Operating System:	Windows Server 2025
Processors	2 x Xeon 8 core
RAM:	128 GB
System disks:	Dual redundant 480 TB SSDs
Interface to 360 TB Node:	2 x 32 Gb/s Fibre Channel
Base Model Network Ports:	4 x 1 GbE (RJ45 connectors)
Optional Additional Network Ports:	Two 10 GbE or 25/10 GbE ports – see hardware upgrade options
Network Protocols:	CIFS/SMB, NFS and FTP
Object Storage API:	S3
USB Ports:	1 x USB 3.0 in front   2 x USB 3.0 in rear
Spare PCIe Slots:	5
Number of Power Supplies:	Two – dual redundant
Power (per power supply):	100-240V, 50-60 Hz   800W (200-240V, 50-60 Hz   800W – EU Models)
19 Inch Rack Form Factor:	2 U
Depth:	733 mm (28.9 inches)
Weight:	22 Kg (48.5 lbs)
Rack Rails:	Included
<b>360 TB Node – included in base system</b>	
Disks:	24 x 18 TB SAS hot swap
Disk Configuration:	22 in RAID6 plus 2 x hot spares
Usable Capacity <sup>1</sup> :	360 TB
RAID Cache:	64 GB
Interface to Archive Appliance:	2 x 32 Gb/s Fibre Channel
Number of Power Supplies	Two – dual redundant
Power (per power supply)	100-240V; 50-60 Hz   460W
19 Inch Rack Form Factor:	4 U
Depth:	500 mm (19.7 inches)
Weight:	43.5 Kg (96 lbs)
Rack Rails:	Included

## Appliance Upgrade Options

XenData Part Number	Description
101091	Dual port SFF-8644 12 Gb/s SAS adapter for connection to an LTO library with one or two SAS drives. Uses one PCIe slot.
143006	Dual port 10 GbE Base-T network adapter for use with CAT6 or UTP cabling.
143005	Dual port 10/25 GbE SFP+ network adapter. Optical transceivers (SKU 101081 or 101172) not included.
101081	SFP+ 10 GbE Transceiver. Quantity 2 required to use both ports in a dual port adapter. Suitable for use with item 143004.
101172	SFP28 25 GbE Transceiver (JL484A Compatible). Quantity 2 required to use both ports in a dual port adapter. Suitable for use with item 143004.



## Specification - Additional Node<sup>2</sup>

XenData Part Number 305102

Disks:	24 x 18 TB SAS hot swap
Disk Configuration:	22 in RAID6 plus 2 x hot spares
Usable Capacity <sup>1</sup> :	360 TB
RAID Cache:	64 GB
Interface to Archive Appliance <sup>2</sup> :	2 x 32 Gb/s Fibre Channel
Number of Power Supplies	Two – dual redundant
Power (per power supply)	100-240V; 50-60 Hz   460W
19 Inch Rack Form Factor:	4 U
Depth:	500 mm (19.7 inches)
Weight:	43.5 Kg (96 lbs)
Rack Rails:	Included

### Notes

- 1 TB equals 10<sup>12</sup> bytes.
- Includes a PCIe card with two dedicated 32 Gb/s FC ports for insertion in the E100 Appliance

## Contact Us

### XenData USA

**Address:** 20005 State Highway 88, Suite D, Pine Grove, CA 95665  
**Phone:** +1 925 465 4300 | **Email:** [xendata@xendata.com](mailto:xendata@xendata.com)

[www.xendata.com](http://www.xendata.com)

### XenData Europe

**Address:** The Quad Cambridge, No.9 Journey Campus, Castle Park, Cambridge CB3 0AX, UK  
**Phone:** +44 1223 370114 | **Email:** [xendata@xendata.com](mailto:xendata@xendata.com)