



Product Brief

XenData Workstation Software



Overview

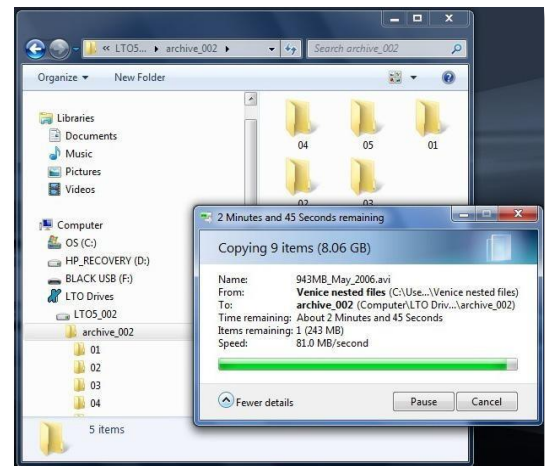
XenData Workstation software runs on a Windows computer and manages one or more LTO tape drives and an unlimited number of offline LTO cartridges. It provides almost infinite storage, saving files to LTO using the industry standard LTFS or TAR formats. The software is designed for ease of use: all archive and restore operations are performed via Windows File Explorer.

System Functionality

Archive and Restore via Drag and Drop or Copy and Paste

Archive and restore operations are always performed using Windows File Explorer. XenData extends Windows Explorer's capabilities to transfer files to and from LTO using drag and drop or copy and paste. Files may be archived to LTO from any accessible logical drive letter or network share. Similarly, files may be restored to an available drive letter or share. The system maintains file and folder structures, allowing the transfer of nested folders to and from LTO tape.

The software gives an option to copy to LTO only files that have changed or are new. This is an easy way to create an updated copy of project folders on LTO.



Supports All File Types

All file types are supported including non-video files.

Manages an Unlimited Number of Offline Tapes

XenData Workstation software can manage a large offline LTO tape archive as the files and folder structure stored on all tapes that have ever been inserted into the LTO tape drive may be retained. You can browse the contents of offline tapes using Windows Explorer and should you need to restore one or more files or folders, the system will prompt with the name of the offline tape.

Writes in Industry Standard TAR or LTFS Format

XenData Workstation from version 6.10 supports both LTFS (Linear Tape File System) and TAR (Tape ARchive) cartridge formats. These formats define how data is written to the tape media: LTFS and TAR use different data structures for the file data and file system metadata that is written to tape. When formatting an individual LTO cartridge, the administrator selects either TAR or LTFS.

LTO Cartridges may Transfer between Systems

As files are saved to LTO tape, the system keeps track of the contents by updating a XenData tape contents catalog that is stored on the hard disk of the Windows computer.

With LTFS formatted cartridges, the contents of the tape are maintained on both the XenData tape contents catalog stored on the hard disk of the system and on an index partition on the tape. When an LTFS-formatted cartridge is moved to another XenData or third-party system that supports LTFS, the contents will be updated on this other system.

When the TAR formatted cartridge becomes full, the system automatically writes a copy of the tape contents catalog to the end of the tape. The catalog may be written to the tape at any time by using a finalize operation; this will write the catalog to the end of the tape and then end of tape marks are written which prevent more files being written to that tape. When a finalized cartridge is moved to another XenData system, the contents will be quickly updated on this other system.

Reporting on the Entire Archive

XenData Workstation includes a report generator that may be used to create three types of report:

- Archive Status
- File Search
- Tape Cartridge Contents

These reports are useful for managing the contents of the complete archive.

The Archive Status report provides summary information about all the tape cartridges that the system knows about. The File Search report produces a list of files that meet user defined file search criteria and identifies the tapes that contain each match. The Tape Cartridge Contents report produces a list of the contents of a selected tape cartridge, including any offline cartridge. The reports may be saved in a delimited text format suitable for import into Excel.

Report Type: File Search
Volume Set: All Volume Sets
Search Type: File Name Text
Search: \Venice2*avi

| No | File Name | Generation | Version | File Size (bytes) | Volume Label |
|----|--------------------------------------|------------|---------|-------------------|------------------|
| 1 | /X0004A/Venice2/1_3_8GB-May_2006.avi | 0 | 1 | 1,487,700,480 | Barcode:X0004AL4 |
| 2 | /X0004A/Venice2/392MB_May_2006.avi | 0 | 1 | 411,132,928 | Barcode:X0004AL4 |
| 3 | /X0004A/Venice2/943MB_May_2006.avi | 0 | 1 | 989,532,160 | Barcode:X0004AL4 |
| 4 | /Venice2/1_3_8GB-May_2006.avi | 0 | 1 | 1,487,700,480 | Barcode:X0003AL4 |
| 5 | /Venice2/392MB_May_2006.avi | 0 | 1 | 411,132,928 | Barcode:X0003AL4 |
| 6 | /Venice2/943MB_May_2006.avi | 0 | 1 | 989,532,160 | Barcode:X0003AL4 |

System Requirements

| Item | Requirement |
|---------------------------|---|
| Operating System | Windows 11, 10, 8.1 and 7. All 64 bit Editions are supported. |
| Minimum CPU | AMD or Intel 2 GHz processor |
| Minimum RAM | 4 GB |
| For SAS LTO drive | Available PCIe slot and a certified PCIe SAS card |
| For USB LTO drive | Available USB port |
| For Thunderbolt LTO drive | Available Thunderbolt port |

Please refer to the XenData website for a list of [supported devices](#).

Contact Us

XenData USA

Address: 20005 State Highway 88, Suite D
Pine Grove, CA 95665
Phone: +1 925 465 4300 | **Email:** xendata@xendata.com

www.xendata.com

Last Updated on: August 6, 2024

XenData Europe

Address: The Quad Cambridge, No.9 Journey Campus
Castle Park, Cambridge CB3 0AX, UK
Phone: +44 1223 370114 | **Email:** xendata@xendata.com