

# Installation Guide

## Workflow API Software, Build 2343

Document updated: December 22, 2015

### File Server Prerequisites

The server must meet all the prerequisites for XenData6 Server software which must be installed on the server prior to installation of the Workflow API.

For integration with third party applications that require use of the SearchObjects function, install Microsoft SQL Server CE version 4.0. This required for integration with Harmonic Media Application Server and ProXplore.

To install SQL Server CE, launch *SSCERuntime\_x64-ENU.exe* and accept defaults.

### XenData Software Installation

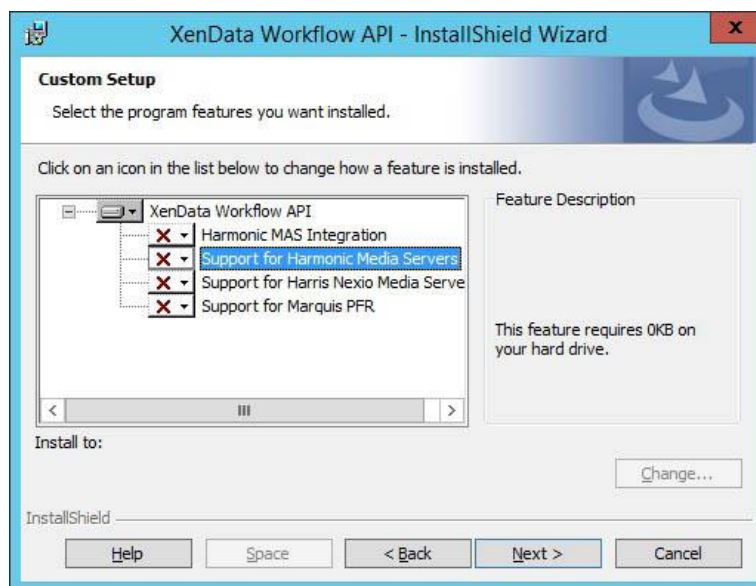
Installation has two steps:

1. Install Workflow API using the setup wizard.
2. Run the XenData License Administration Utility.

You will need a XenData license Activation Code for the last step. This 10 character code starts with WF. Licensing is easier if you have Internet access on the file server that you will be licensing, but the XenData License Administration program provides alternative ways of obtaining a license code if Internet access is not available.

#### Step 1: Install the Workflow API Software

Double click the XenData setup application file and follow the instructions provided by the setup wizard. When you reach the Custom Setup screen shown below, add any required features. These are special features needed only for some specific third party integrations. Many configurations do not require any of the features.




## Step 2: Run License Administration

Open the XenData License Administration utility. The License Administration detects the unique identity for the machine and prompts you to enter the XenData Activation Code.

To open the XenData License Administration utility on Windows Server 2008 R2 and Windows 7:

1. Click **Start**
2. Click **Programs**
3. Click **XenData**
4. Click **XenData License Administration**

For Windows Server 2012 R2:

1. Click on the **Start** button, located in the lower-left hand corner of the screen
2. Click the arrow  near the lower-left corner of the Start screen.
3. Click on **XenData License Administration** shown under the XenData category

When Internet connectivity is available for the server, select 'Internet' as the Activation Option. Then enter the Workflow API Activation Code in the Activation Code box, overwriting the displayed entry, and then select 'OK'. A digitally signed activation file is then automatically generated and downloaded to the server.

If Internet access is not available for the server being licensed but is available on another machine, perform the following steps:

1. Select the 'Generate request for license' option and click *Apply*.
2. The License Administration program prompts you for a file name. Choose a convenient name for the file and click *Save*.
3. Transfer the file that you have just saved to a different machine that has Internet access.
4. Open the file in your Web browser by double clicking on it.
5. Right-click on the link in the file you have just opened and select 'Save *target as...*' and select a location to save your license file.
6. Copy the saved license file back to the server that is being licensed.
7. In the license administration utility, select the 'Import file' option and click *Apply*.
8. Browse to the saved XML license file and open it.

Alternatively if no Internet access is available, please contact XenData Technical Support with the machine ID. A suitable digitally signed activation file will be returned. Save the activation file, select '*Import File*' as the Activation Option and then select 'OK'. Browse to the supplied activation file and click 'OK'.

This completes the licensing process and the Workflow API installation.